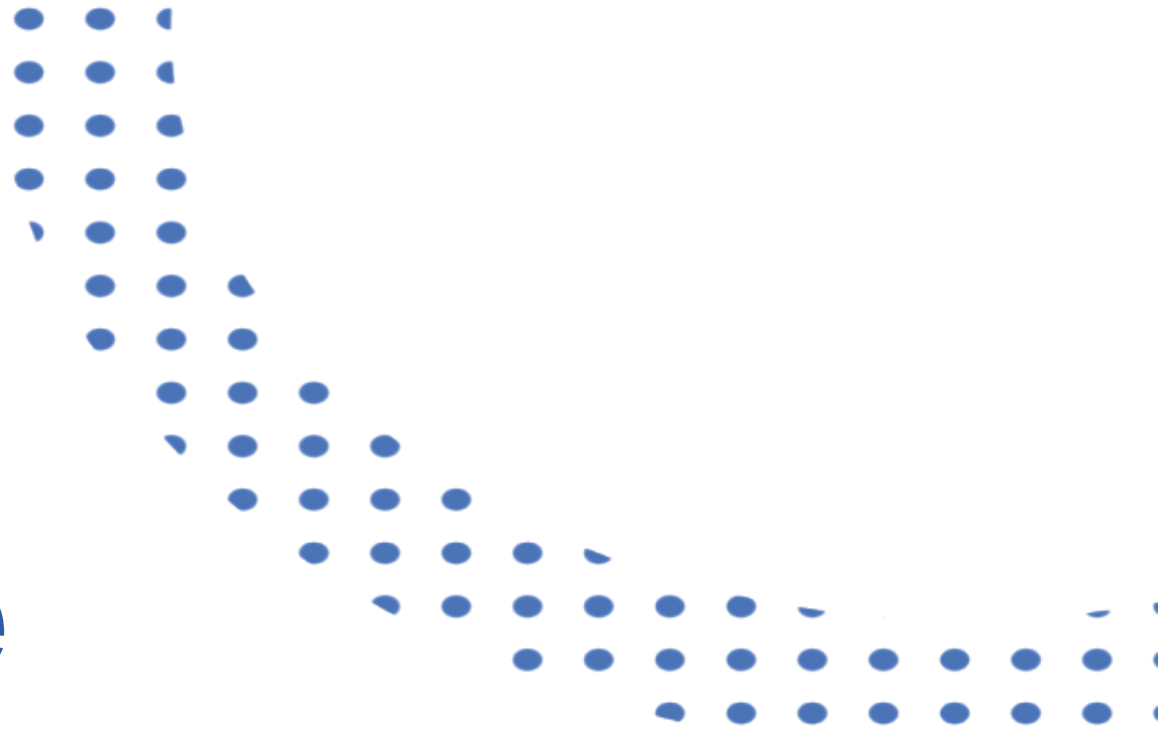


The Personal Learning Device (PLD) Initiative

Briefing for Parents

A PRESENTATION BY
MINISTRY OF EDUCATION, SINGAPORE



Overview of Briefing

- National Digital Learning Programme (NDLP)
- Learning @ Northbrooks Secondary School
- Supporting Safe and Effective Use
- Device and Funding
- Key Dates to Remember



The National Digital Literacy Programme and the PLD Initiative

An Overview

The National Digital Literacy Programme (NDLP)

1. The NDLP was launched in March 2020 to help students **strengthen their digital literacy and acquire digital skills** needed to navigate an increasingly digitalised world.
2. Under the NDLP, every secondary school student will **own a school-prescribed Personal Learning Device (PLD)**. Students may use funds from their Edusave Account to pay for the PLD.

Learning with a PLD

Northbrooks Secondary School

Enhanced Learning through Personal Learning Device @ Northbrooks

LEARNING WITH A PLD

At Northbrooks Secondary School, your child/ward will be using the PLD for...

- Individual/Group work during classroom lessons
- Self-Directed Learning
- Collaborative Learning
- Blended Learning
- Project work

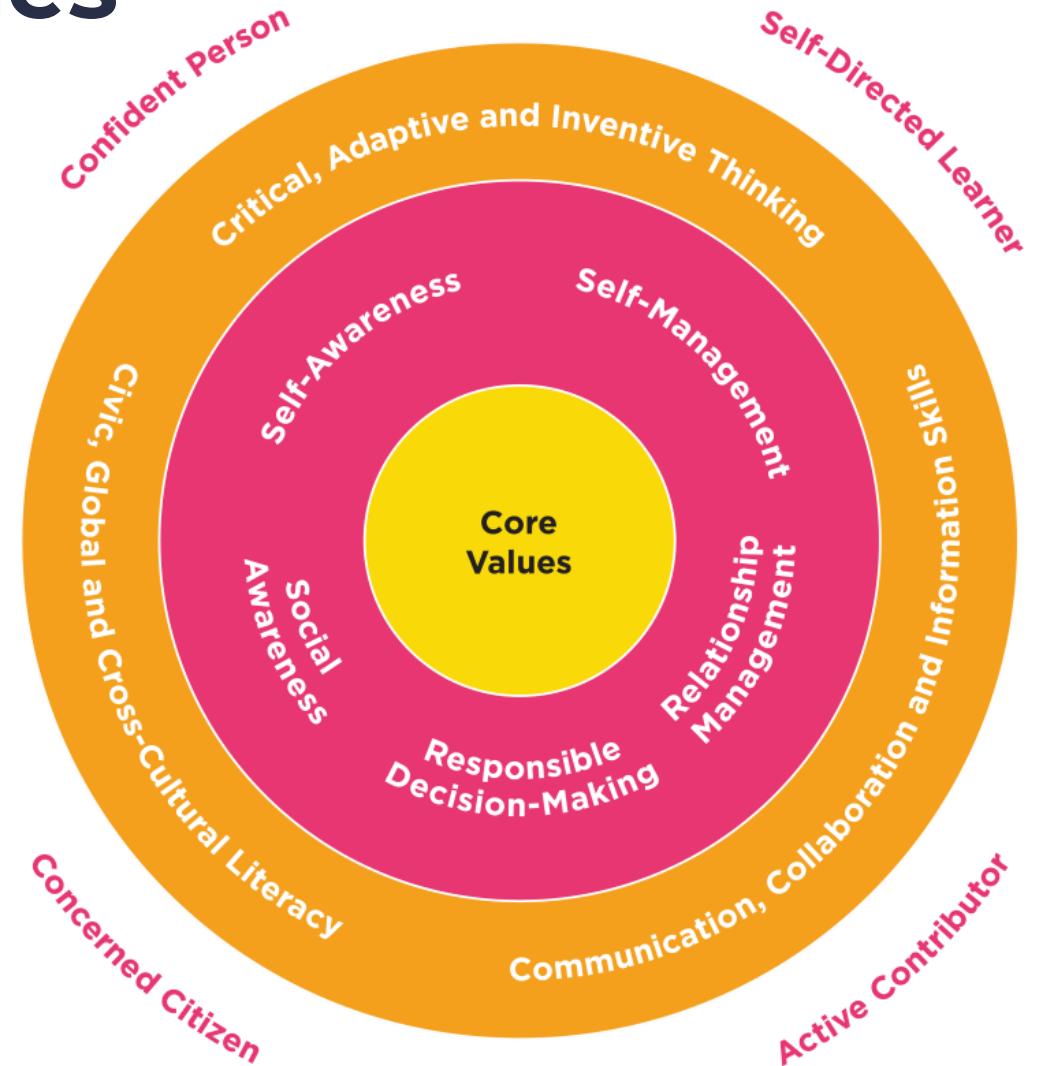


THE NATIONAL DIGITAL LITERACY PROGRAMME AND PLD INITIATIVE

21st Century Competencies

Globalisation, changing demographics and technological advancements are some of the key driving forces of our current times, and they will continue to shape our future.

Our students will have to be prepared to face these challenges and seize new and exciting opportunities. Technology integration can be harnessed to foster effective learning.



Transforming Education Through Technology (EdTech) Masterplan 2030

Nine Digital Competencies

The 9 digital competencies are described below:

1. Digital Safety & Security

Understanding of online behaviour and awareness of how to protect oneself in the online space

2. Digital Responsibility

When navigating the online space, demonstrate respect for oneself and others, and practise safe, responsible, and ethical use

3. Digital Knowledge Currency

Keep up-to-date with technological developments and the use of digital resources, as part of learning for life

4. Computational Thinking

Employ computational thinking together with technological tools to solve problems, e.g. when developing and testing solutions

5. Digital Info Management

Employ effective strategies to locate information and resources, and exercise discernment by evaluating the accuracy, credibility, and relevance of information. Distil and synthesise essential content from the often large amount of information available online

6. Digital Communication, Collaboration & Participation

Leverage digital platforms and tools to communicate ideas, connect with others, and contribute constructively to a common goal

7. Data Competencies

Read, understand, interpret, manipulate, analyse, and present data in meaningful ways

8. Device & Software Operations

Understand how devices and software work in order to use them effectively and productively

9. Coding & Programming

Utilise a variety of digital methods such as block-based programming, text-based programming, or prompt engineering to create digital artefacts, or to develop, test and debug solutions

LEARNING WITH A PLD

Intended Outcomes of the PLD Initiative

The use of the PLD for teaching and learning aims to:



**Support the
Development of
Digital Literacy**



**Support
Self-Directed and
Collaborative Learning**



**Enhance
Teaching and Learning**

**Supporting Students in the Safe
and Effective Use of the Devices**

Supporting Students in the Safe and Effective Use of the Devices

Supporting Safe and Effective Use of PLD

MOE has put in place measures to provide students with a safer digital learning environment:



**Cyber Wellness
Education**



**School-Based Learning
Routines**



**Device
Management
Application (DMA)**



SAFE AND EFFECTIVE USE OF DEVICES

Cyber Wellness Concerns Identified by International Studies



Harmful Online Content

50% of Singaporean teenagers are exposed to cyber threats and 28% of them are exposed to violent content.

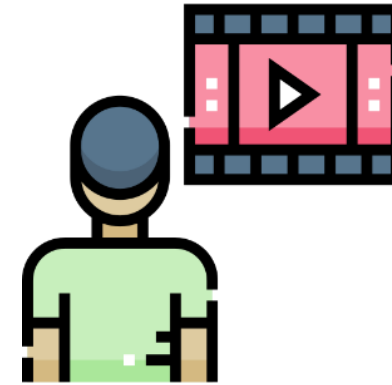
(COSI, 2020)



Distraction from Learning

72% of teens feel compelled to immediately respond to texts, social posts and notifications.

(Kimball & Cohen, 2019)



Excessive Screen Time

Teens who don't sleep enough report higher levels of depressive symptoms than well-rested peers (31% vs. 12%).

(Kimball & Cohen, 2019)



SAFE AND EFFECTIVE USE OF DEVICES

Supporting Students in the Safe and Effective Use of the Devices

The school has measures in place to enable a safer digital environment for learning with the use of PLDs, e.g.

- School rules on digital device use
- Classroom management and routines
- Educating students on Cyber Wellness
- Partnering parents/guardians to ensure that students are well-supported in their use of technology for learning
- Device Management Application (DMA) to support a safer digital environment for learning



SAFE AND EFFECTIVE USE OF DEVICES

Cyber Wellness Education in CCE

Educating students on Cyber Wellness

MOE has made significant changes to the Character and Citizenship Education (CCE) curriculum.

Cyber Wellness lessons will feature significantly in these lessons.

Throughout their Secondary School education, students will learn about:

- Balanced use and self control
- Cyber bullying and Upstanding
- How to be a positive influence online
- How to handle online falsehoods
- How to manage social media (peer influence, emotions, echo chambers)
- Online relationship and Online safety (grooming, self disclosure)
- To respect intellectual property rights



SAFE AND EFFECTIVE USE OF DEVICES

Parents'/Guardians' Role

- We would like to partner parents/guardians so that that students are well supported in their use of technology for learning.
- As parents/guardians, you can help in the following ways:
 - Model good digital habits for your child/ward e.g. parents/guardians not using devices during family meals.
 - Know your child/ward well, and have conversations with your child/ward about safe and responsible use of technology.
 - Discuss and come up with ground rules for internet/device usage that both your child/ward and you can agree with.
 - Encourage your child/ward to use productivity tools using his/her PLD, to organise information and simplify tasks for efficiency.

Role of the DMA in Providing a Safer Digital Environment for Learning

PROVIDING A SAFER DIGITAL ENVIRONMENT FOR LEARNING

Device Management Application Installation

- The iPad Device Management Application (**DMA**) solution, Jamf, will be installed on all students' devices to provide a safe learning experience for students. The DMA will be funded by MOE.
- DMA will be installed after the collection of the device. Students will be guided on the installation.
- The installation of DMA applies to both devices purchased through the school and any student-owned devices that parents/guardians opt for the student to use in lieu of the school-prescribed PLD.
- The DMA will be **uninstalled** from the device **when your child/ward graduates/leaves the school.**

PROVIDING A SAFER DIGITAL ENVIRONMENT FOR LEARNING

In-School DMA Settings (Default)

Schools will determine DMA settings for **in-school use**. As a default, these settings will continue to be in place after school as well:

- MOE and the school will set the level of web content filtering, including filtering out objectionable content or content that may not be conducive to teaching and learning (e.g. social media, pornography, gambling, or websites containing extremist content)
- The school will determine the apps and programmes to be installed to support teaching and learning.



PROVIDING A SAFER DIGITAL ENVIRONMENT FOR LEARNING

After-School DMA Parent Options

1. After-School DMA Parent Options provide parents with the flexibility in managing your child’s/ward’s use of PLD after school hours.
2. The following tables outline the different levels of restrictions, controls, and monitoring for each After-School DMA Parent Option.

Default	Option A	Option B
In-school DMA settings will continue after school hours	DMA settings can be modified by Parents/Guardians after school hours	DMA will be inactive* after school hours
For parents/guardians who want their child’s/ward’s use of the device to be restricted only to teaching and learning, and prefer to leave it to the school to decide on DMA settings after school hours.	For parents/guardians who prefer to take charge of the level of restrictions for their child’s/ward’s use of the device after school hours regulated by the DMA.	For parents/guardians who do not want their child’s/ward’s use of the device after school hours to be regulated by the DMA at all.

*No data will be collected after school hours when the DMA is inactive.

- Having default school settings continue after school hours is the best option for parents/guardians who prefer not to, or do not feel ready to manage their child’s/ward’s device use on their own.
- Parents/guardians can request to change their choice of DMA settings, which is the existing practice.

PROVIDING A SAFER DIGITAL ENVIRONMENT FOR LEARNING

After-School DMA Parent Options

	Default Setting (This will apply if no Alternative Setting is chosen)	Alternative Setting: Option A (DMA settings can be modified from the Default settings in place)	Alternative Setting: Option B (DMA will be inactive only after school hours)
Protect students from objectionable content	Web content filtering will include, but not limited to the following categories: <ul style="list-style-type: none">• Violent/extremist content• Sexual/pornographic content• Gambling-related content	Parents/Guardians will be able to include additional web content filtering by submitting a request to the school.	No content filtering at all after school hours.

PROVIDING A SAFER DIGITAL ENVIRONMENT FOR LEARNING

After-School DMA Parent Options

	Default Setting (This will apply if no Alternative Setting is chosen)	Alternative Setting: Option A (DMA settings can be modified from the Default settings in place)	Alternative Setting: Option B (DMA will be inactive only after school hours)
Reduce distractions from learning through control of applications	Parents/Guardians and students will be <u>unable</u> to install additional applications.	<ol style="list-style-type: none"> 1. Parents/Guardians and/or students will be able to install additional applications after school hours. 2. Applications installed by parents/guardians and/or students after school hours will not be accessible during school hours. 3. Parents/Guardians can limit access to applications installed on the device. 	<ol style="list-style-type: none"> 1. Parents/Guardians and/or students will be able to install additional applications after school hours. 2. Applications installed by parents/guardians and/or students after school hours will not be accessible during school hours.

PROVIDING A SAFER DIGITAL ENVIRONMENT FOR LEARNING

After-School DMA Parent Options

	Default Setting (This will apply if no Alternative Setting is chosen)	Alternative Setting: Option A (DMA settings can be modified from the Default settings in place)	Alternative Setting: Option B (DMA will be inactive only after school hours)
Limit screen time	The school will define the specific hours during which the student can use the device.	<ol style="list-style-type: none"> 1. Parents/Guardians can adjust their child's/ward's screen time by setting rules on the device*. 2. Parents can determine the duration of use of specified applications. 	No control over screen time.
Monitor students' cyber activities	Parents/Guardians will <u>not</u> be able to track their child's/ward's browser history.	Parents/Guardians will <u>not</u> be able to track their child's/ward's browser history via the parent account.	Parents/Guardians will <u>not</u> be able to monitor or control their child's/ward's use of the device through the DMA.
Provision of Parent Account	X	✓	X

PROVIDING A SAFER DIGITAL ENVIRONMENT FOR LEARNING

Support for Parents/Guardians

Parents/guardians may wish to consider the following questions to decide the After-School DMA Parent Option that best suits your child/ward.



A. Child's/ward's current device usage habits

- How much time does my child/ward spend on their device?
- How well is my child/ward able to regulate their device usage on their own?
- Does my child/ward get easily distracted while doing online learning?



B. Parents'/Guardians' involvement

- How confident and familiar am I with managing my child's/ward's cyber wellness?
- Are there existing routines and open conversations on the use of the Internet at home?
- Am I aware of how to prevent different types of cyber threats that my child/ward might face?

PROVIDING A SAFER DIGITAL ENVIRONMENT FOR LEARNING

Data Collected by the DMA

The DMA does **NOT** collect any of the following data:

- Login IDs and passwords entered into websites or into any applications
- Actions performed (e.g. posts, online comments, items added to a shopping cart, etc.) when visiting websites and using apps
- Documents and photos stored in the PLDs
- PLD location
- Webcam videos and microphone recordings

PROVIDING A SAFER DIGITAL ENVIRONMENT FOR LEARNING

Data Security

- All user data collected through the DMA will be stored in secure servers managed by appointed DMA Vendors with stringent access controls and audit trails implemented. The DMA solutions used are cloud-based Software-as-a-Service (SaaS) solutions and are trusted solutions that have been operating for many years. They have also been subject to regular security review and assessment by independent reviewers.

PROVIDING A SAFER DIGITAL ENVIRONMENT FOR LEARNING

Data Security

- DMA solutions have sufficient security robustness to ensure data collected are properly stored and protected. MOE will also subject the DMA Vendors to regular audit on the security of the system based on tender requirements.
- To prevent unauthorised access, DMA Administrators and DMA Vendors will be required to access their accounts using 2-factor authentication or the equivalent to ensure proper accountability for information access and other activities performed. There will be regular account reviews and audits for DMA Administrators' and DMA Vendors' accounts.

PROVIDING A SAFER DIGITAL ENVIRONMENT FOR LEARNING

Supporting Resources

Parents/guardians play a crucial role in guiding your child/ward to use devices responsibly and safely. DMA complements your efforts in supporting your child/ward as they navigate the digital space. Here are some resources that you can refer to:

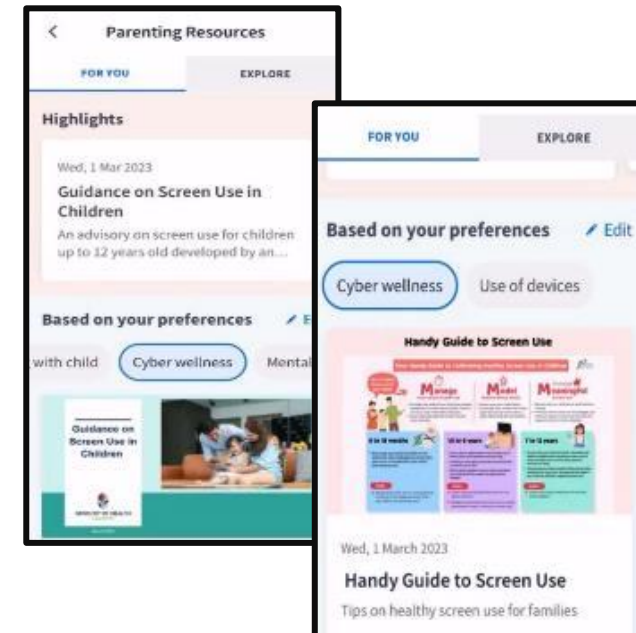
A. Parent Kit



B. Bite-size tips and advice via Parentingwith.MOEsg Instagram



C. Resources from MOE and other agencies (available on resources repository in Parents Gateway)

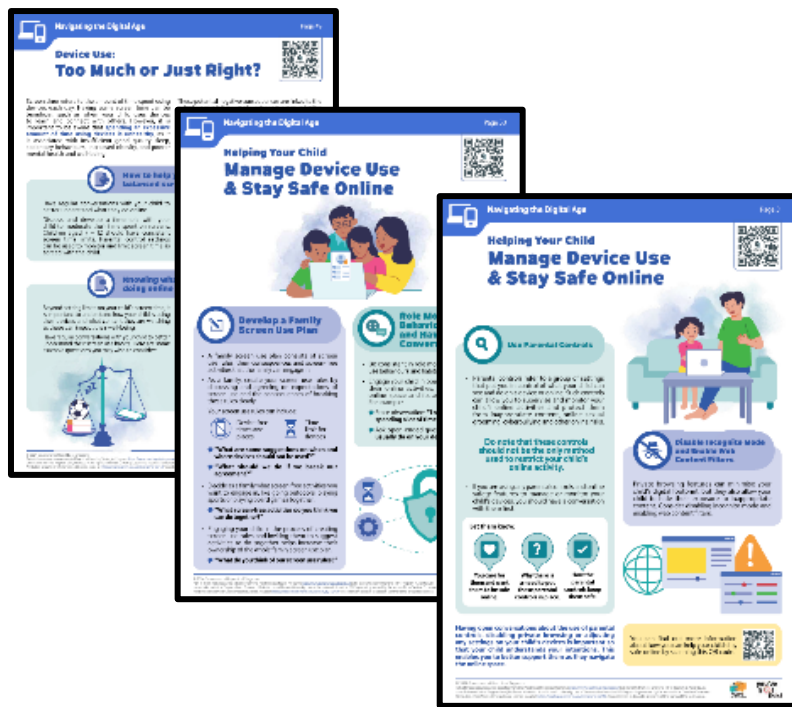


PROVIDING A SAFER DIGITAL ENVIRONMENT FOR LEARNING

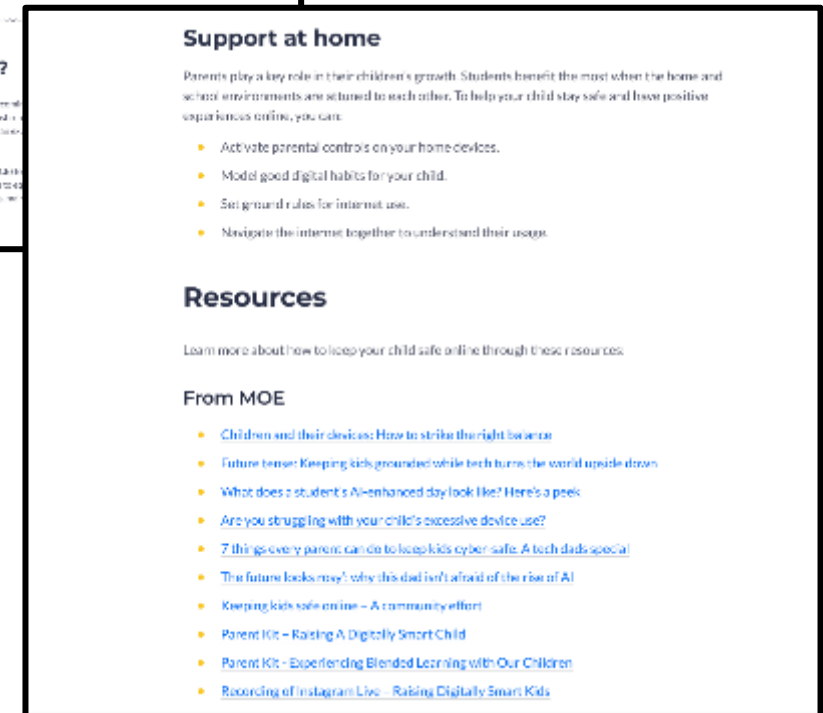
Supporting Resources

D. Parenting for Wellness Toolbox for Parents

The following extracted quick tips and strategies have been shared to you via Parents Gateway. Click on the pink header to download the full suite of resources of the Toolbox.



E. More resources are available via MOE Cyber Wellness Webpage

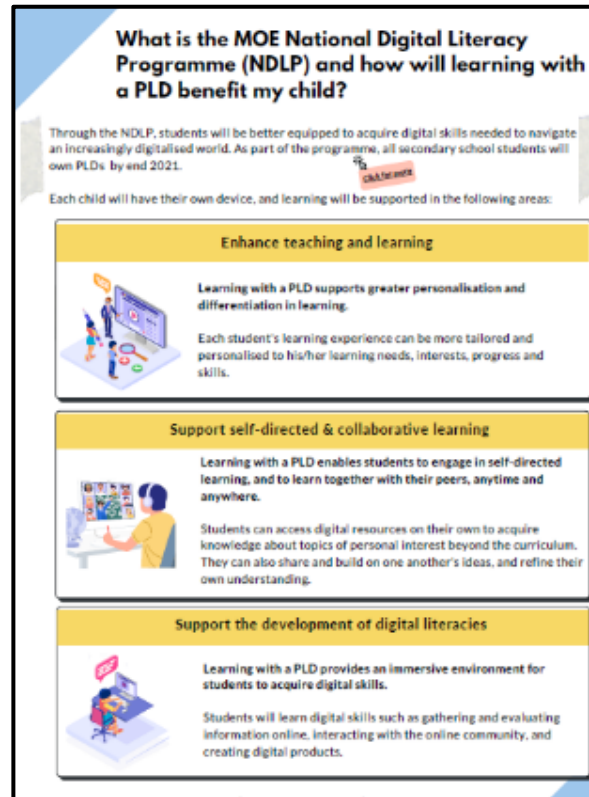
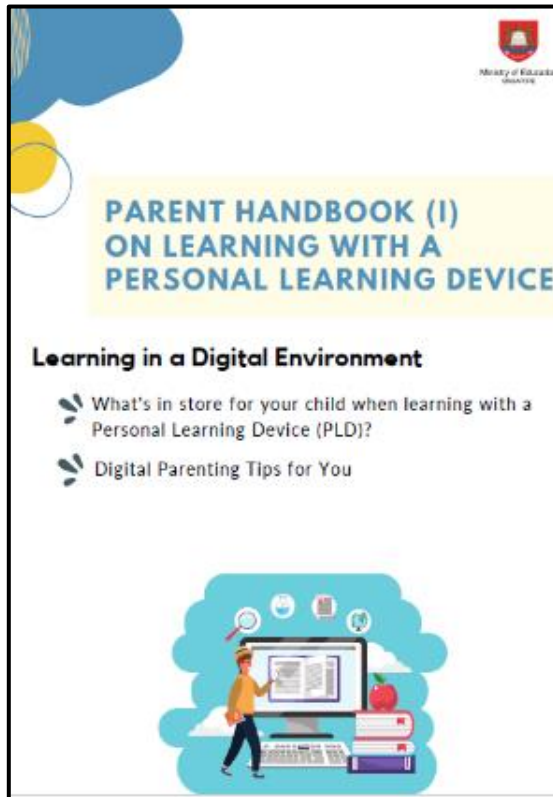


PROVIDING A SAFER DIGITAL ENVIRONMENT FOR LEARNING

Supporting Resources

F. Parent Handbooks (I) and (II) on Learning with a Personal Learning Device

These Handbooks provide tips on supporting your child in the use of PLDs for learning and are shared via the PG notification together with the letter to purchase PLDs.



Device and Funding Information

DEVICE AND FUNDING INFORMATION

Personal Learning Device

10.9"
Liquid Retina
display



A14
Bionic
chip

The school will be using the **10th Gen Apple iPad** for teaching and learning.

Total Cost with GST:
\$870.90*
(indicative price)

64 GB
Storage

Wi-Fi
477 g



DEVICE AND FUNDING INFORMATION

Personal Learning Device Bundle

Enhanced Device Bundle



The Enhanced Device Bundle that includes:

- 1) a 10th Gen Apple iPad (10.9"), 64GB,
- 2) an Apple Pencil (USB-C) for iPad
- 3) a Logitech Ruggedized Combo 4
- 4) a Matte Screen Protector

* 3-year warranty and 3-year insurance (iPad only)

* 2 repairs or 1 replacement claim



DEVICE AND FUNDING INFORMATION

Funding Support for Singapore Citizen (SC) Students

- **The cost of the device bundle can be paid using your child's/ward's Edusave account**, after setting aside provision for payment of miscellaneous fees.
- To ensure the affordability of devices, MOE has provided additional Edusave top-ups of \$200 in 2020 to 2022, and \$300 in 2023, to all eligible Singaporean students in primary and secondary schools.
- This is on top of the annual \$290 credited into the Edusave account for Secondary School students and \$230 for Primary School students.

Students eligible for subsidy	Remarks
<p>Students under MOE FAS</p>	<p>one off subsidy of \$350.00 will be provided with the remaining balance be paid through your child's Edusave.</p>
<p>Students under School-based FAS</p>	<p>A one-off subsidy of \$200.00 will be provided with the remaining balance be paid through your child's Edusave.</p>
<p>Non FAS SC Students & IS/SPR</p>	<p>Payment will be in full through Edusave for SC students. In the event that Edusave is insufficient, the remaining balance will be paid in cash.</p> <p>IS/SPR will pay by cash.</p>

* Please approach the school if additional help is required.



What's Next?

WHAT'S NEXT?

Parental Consent for Procurement

1. Parents can access the **Parental Consent for the Purchase of Personal Learning Device (PLD)** via a **Parents Gateway (PG)** notification* that will be sent to you on **24 Jan 2025**.
2. Parents who want to use Edusave funds for the PLD (for Singapore Citizens students only), please submit the online Standing Order Form via this link: <https://go.gov.sg/edusaveformsgso> by **24 Jan** if you have not done so previously.

* Parents/Guardians without access to PG can request for the hardcopy letter via your child's/ward's form teacher.



WHAT'S NEXT?

Parental Consent for Procurement

Standing Order for Use of Edusave Account At Govt / Govt-Aided School

— Instructions

3. Student Name

4. Secondary School / Junior College / Centralised Institute

NGEE ANN SECONDARY SCHOOL

NORTH VISTA SECONDARY SCHOOL

NORTHBROOKS SECONDARY SCHOOL

NORTHLAND SECONDARY SCHOOL

6. I wish to use my child s/ward's Edusave account for payment of local and overseas enrichment programme charges. (optional)

Yes

WHAT'S NEXT?

For Singapore Citizens (SC) Students

Time Frame	Activity
24 Jan 2025	<p>Submit:</p> <ol style="list-style-type: none">consent to PLD purchase via in the PG notification which includes the following:<ul style="list-style-type: none">Intent to Purchase Personal Learning Device (PLD);Authorisation Form for the Collection of PLDthe Standing Order (SO) for the use of Edusave Account via https://go.gov.sg/edusaveformsgso (for Singapore Citizen students only) if you have not done so previously. Parents without access to PG can submit their consent via hardcopy.
T1W10	Collection of devices by students

** Subjected to availability of stocks. Confirmed date and details of collection will be shared nearer the date.*



WHAT'S NEXT?

For Permanent Residents / International Students

Time Frame	Activity
24 Jan 2025	Submit Parental Consent for the Purchase of Personal Learning Device (PLD) which includes the following: <ul style="list-style-type: none">• Intent to Purchase Personal Learning Device (PLD);• Authorisation Form for the Collection of PLD Through hardcopy letter
Await school billing	Parent/Guardian to make payment via Giro/PayNow
T1W10	Collection of devices by students

** Subjected to availability of stocks. Confirmed date and details of collection will be shared nearer the date.*



WHAT'S NEXT?

Collection of Devices

Your child/ward will be collecting his/her device in school [Term 1 Week 10](#).

- If you would like to verify the condition of the device during collection with your child/ward:
 - You may arrange to collect the device **at the vendor's service/collection centre*** or appoint an adult proxy to do so.
 - Your child/ward would need to bring the device to school and arrange for the school's IT department to install the DMA.

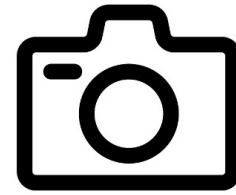
Please approach the school for further advice or clarification if you would like to make this arrangement.

* Parents/Guardians (or adult proxy) will **not** be able to collect the PLD from the school.



WHAT'S NEXT?

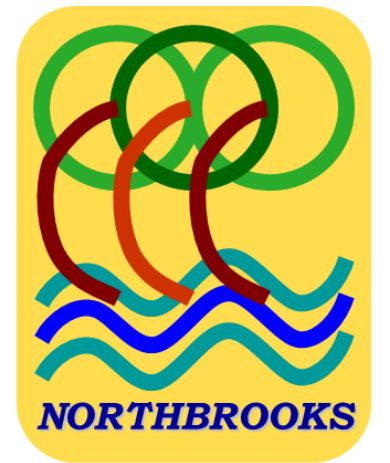
Important Contacts / Helplines



To access / find out more about...	Contact / Helpline
This deck of slides	https://northbrookssec.moe.edu.sg/ (after 10 th Jan 2025)
Edusave balance	6260 0777 (official MOE hotline)
Financial assistance	67524311 (school general office)



Thank You



SOARING YET ROOTED